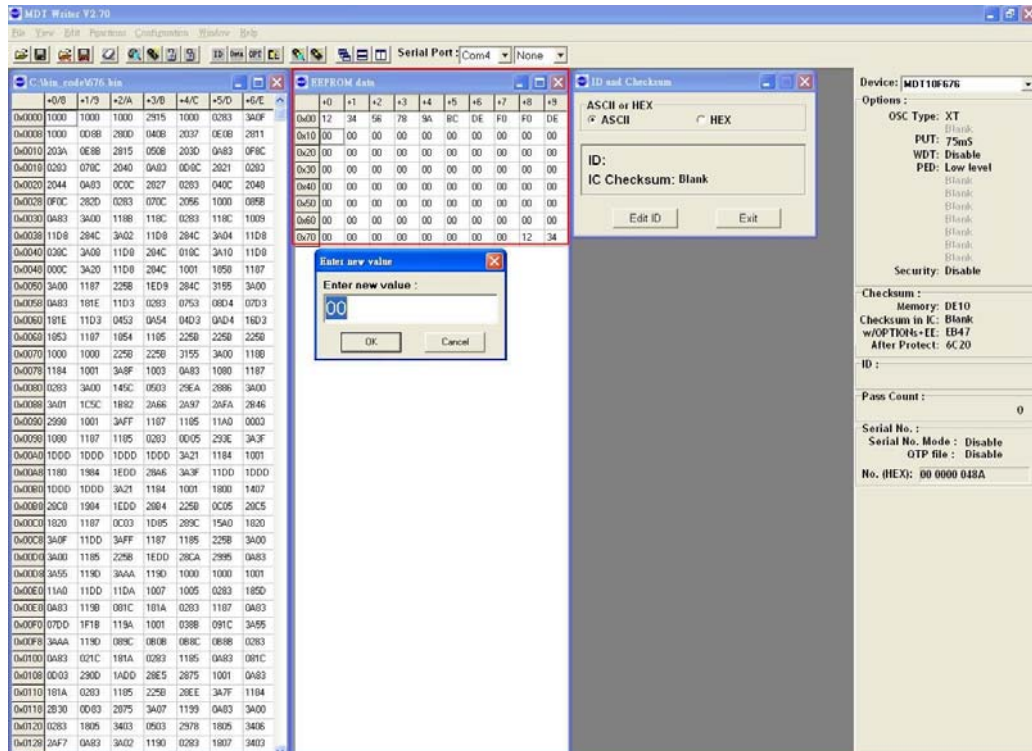
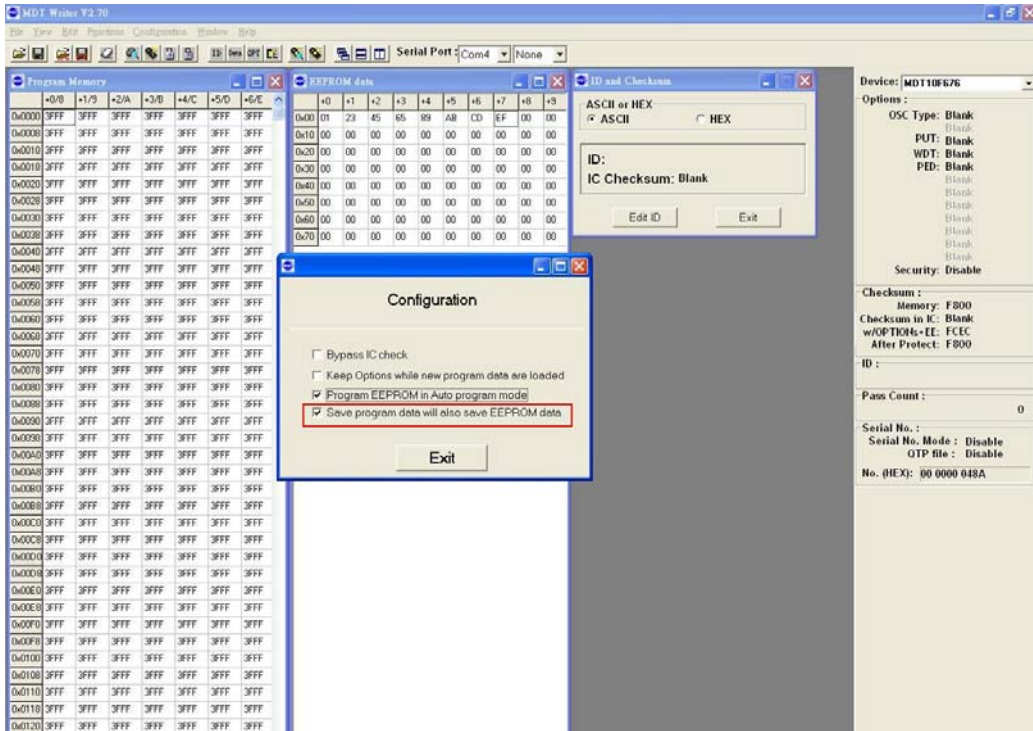


MDT FLASH 系列 MCU 之 EEPROM 資料儲存方式

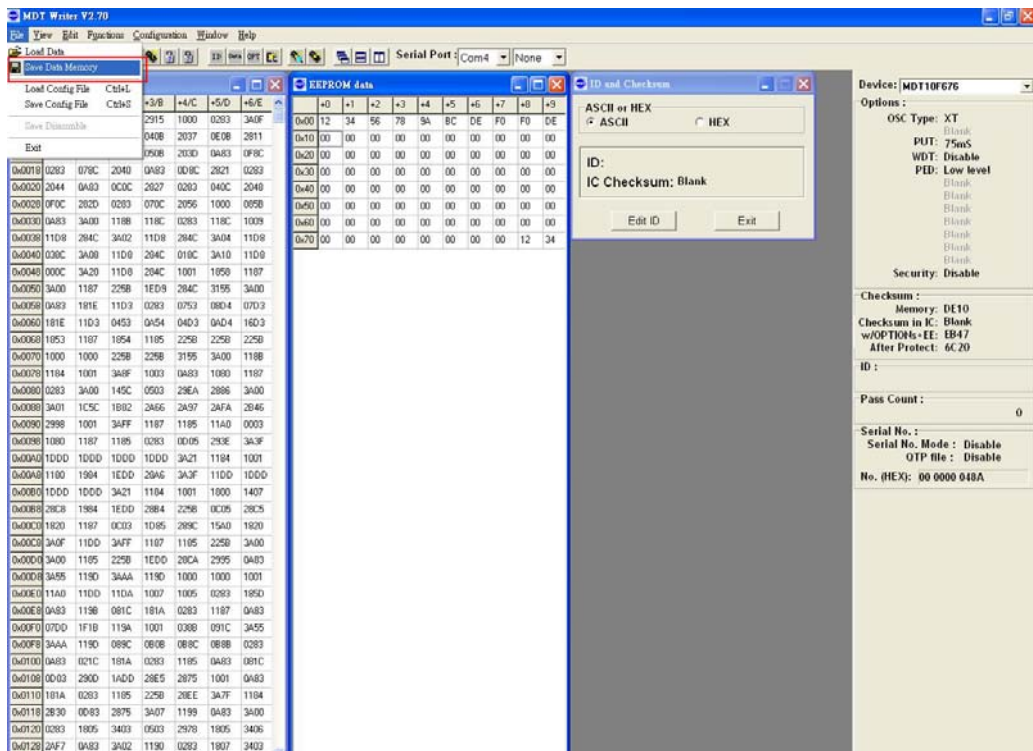
- 首先在 Device 處選擇 MDT FLASH 系列之 MCU，再將要燒寫之程式碼開啓，於 EEPROM 視窗處點選兩下，視窗中可鍵入需要燒寫的 EEPROM 值。



- 在 Configuration 視窗中將 Save program data will also save EEPROM data 勾起。如此才能將 EEPROM 資料儲存於 MDT bin 檔中。



3. 再做一次 save data memory，即可將 EEPROM 另存在 bin 檔中，下次開啓檔案時，EEPROM data 也會一同載入。



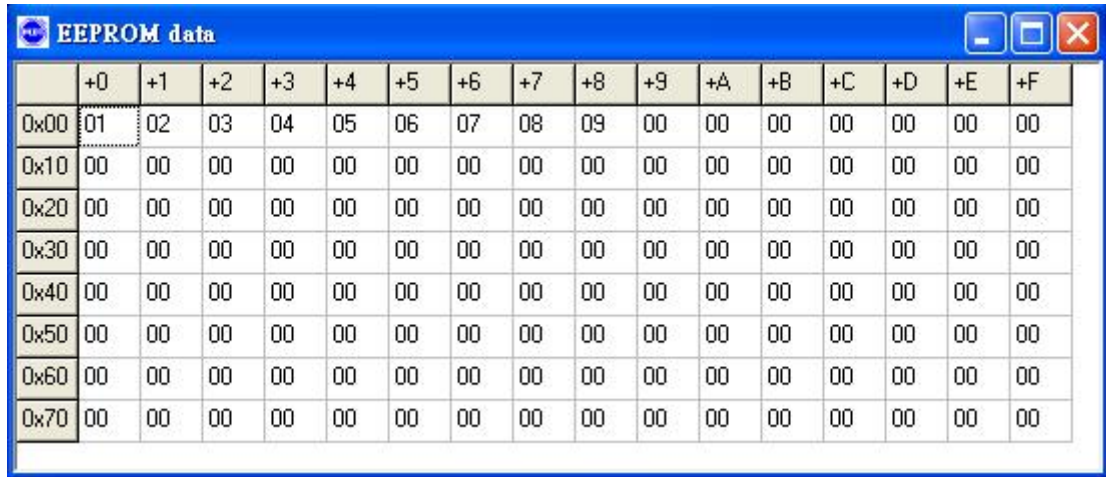
4. Microchip 之 hex file 可以透過編譯將 EEPROM 值包含在二進檔中，再透過 MDT Writer software 開啓 hex 檔。

以下提供 microchip 範例

ORG 2100H

;特殊起始位址

DE 01,02,03,04,05,06,07,08,09 ;[0]=01,[1]=02,[2]=03.....



| | +0 | +1 | +2 | +3 | +4 | +5 | +6 | +7 | +8 | +9 | +A | +B | +C | +D | +E | +F |
|------|----|----|----|----|----|----|----|----|----|----|----|----|----|----|----|----|
| 0x00 | 01 | 02 | 03 | 04 | 05 | 06 | 07 | 08 | 09 | 00 | 00 | 00 | 00 | 00 | 00 | 00 |
| 0x10 | 00 | 00 | 00 | 00 | 00 | 00 | 00 | 00 | 00 | 00 | 00 | 00 | 00 | 00 | 00 | 00 |
| 0x20 | 00 | 00 | 00 | 00 | 00 | 00 | 00 | 00 | 00 | 00 | 00 | 00 | 00 | 00 | 00 | 00 |
| 0x30 | 00 | 00 | 00 | 00 | 00 | 00 | 00 | 00 | 00 | 00 | 00 | 00 | 00 | 00 | 00 | 00 |
| 0x40 | 00 | 00 | 00 | 00 | 00 | 00 | 00 | 00 | 00 | 00 | 00 | 00 | 00 | 00 | 00 | 00 |
| 0x50 | 00 | 00 | 00 | 00 | 00 | 00 | 00 | 00 | 00 | 00 | 00 | 00 | 00 | 00 | 00 | 00 |
| 0x60 | 00 | 00 | 00 | 00 | 00 | 00 | 00 | 00 | 00 | 00 | 00 | 00 | 00 | 00 | 00 | 00 |
| 0x70 | 00 | 00 | 00 | 00 | 00 | 00 | 00 | 00 | 00 | 00 | 00 | 00 | 00 | 00 | 00 | 00 |