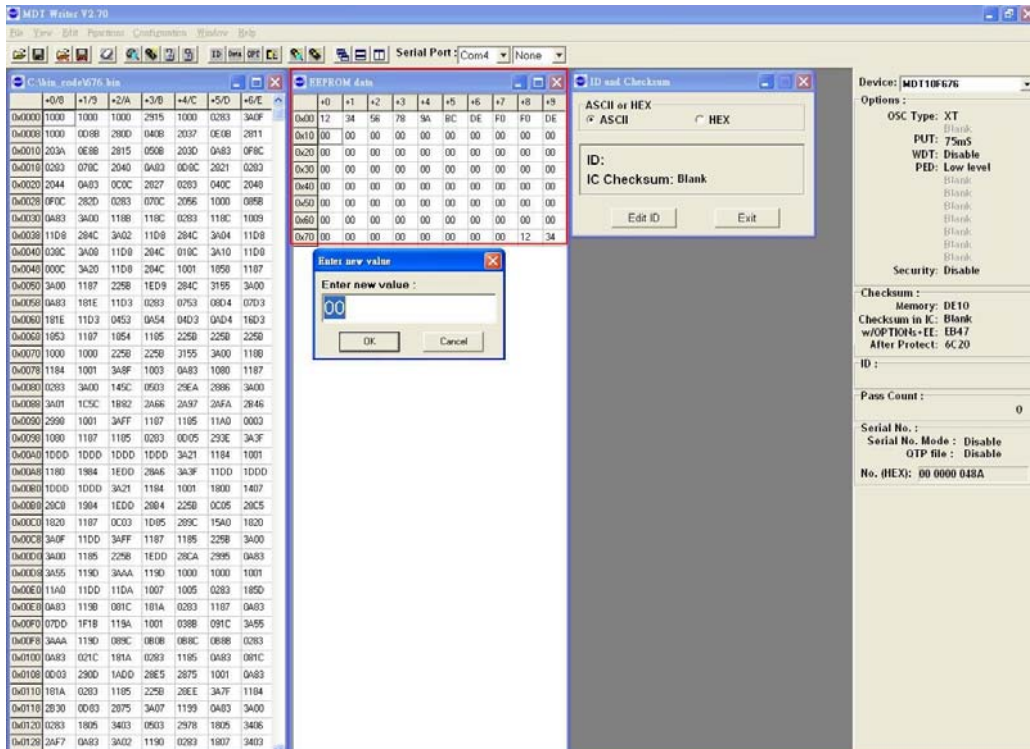
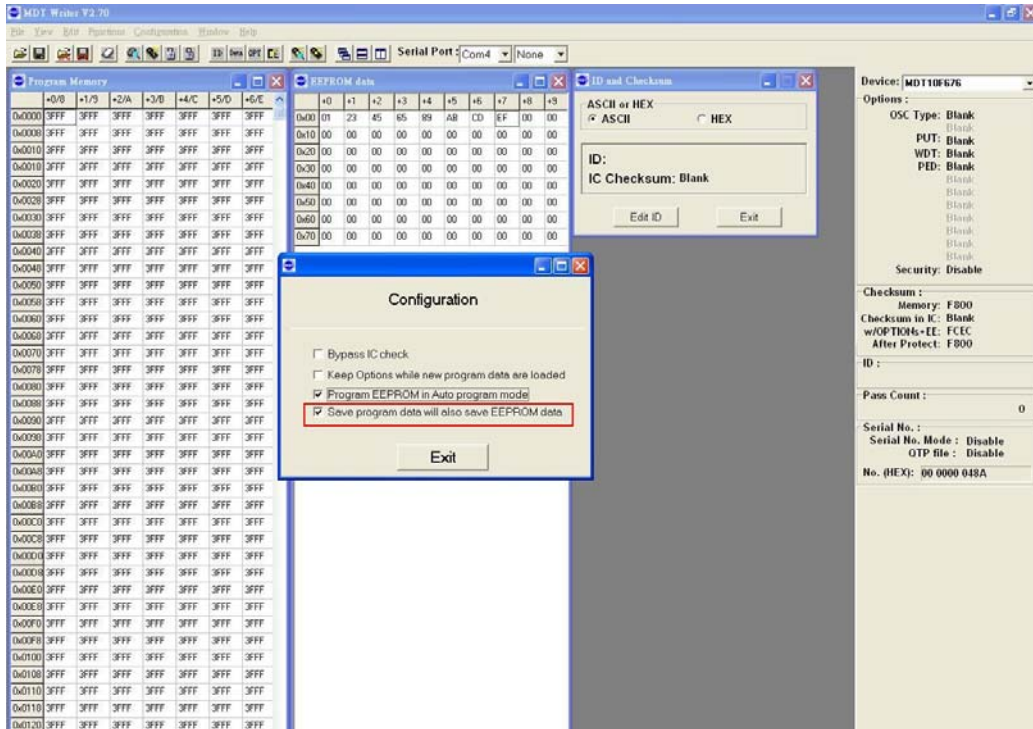


MDT FLASH 系列 MCU 之 EEPROM 数据储存方式

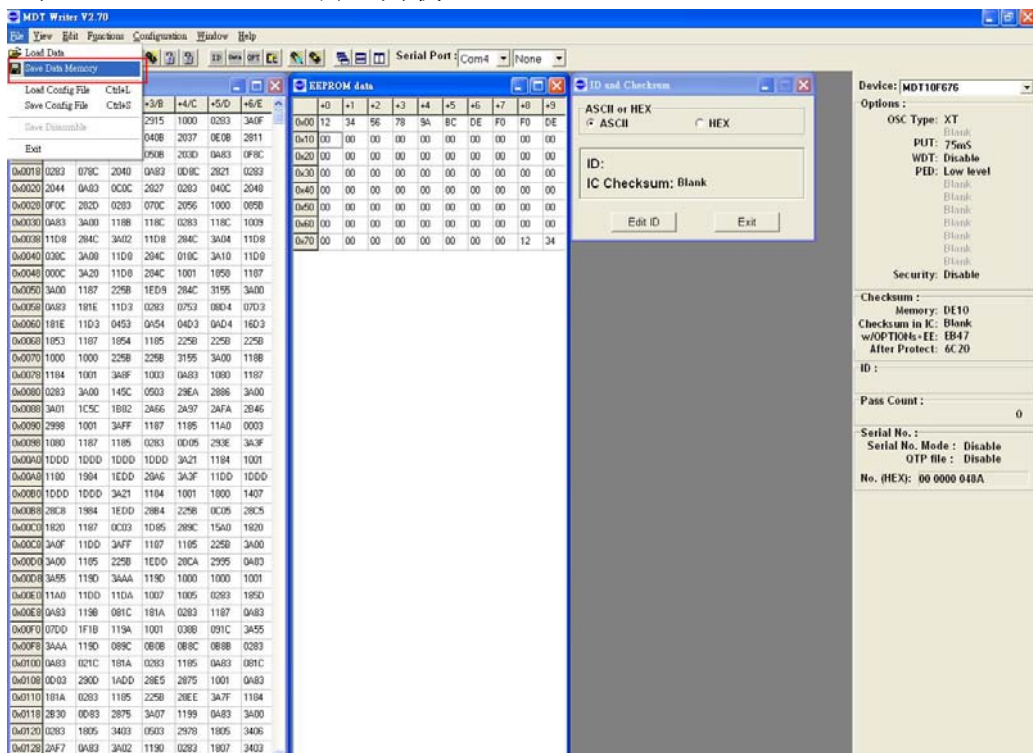
- 首先在 Device 处选择 MDT FLASH 系列之 MCU，再将要烧写之程序代码开启，于 EEPROM 窗口处点选两下，窗口中可键入需要烧写的 EEPROM 值。



- 在 Configuration 窗口中将 Save program data will also save EEPROM data 勾起。如此才能将 EEPROM 数据储存于 MDT bin 文件中。



3. 再做一次 save data memory，即可将 EEPROM 另存在 bin 档中，下次开启档案时，EEPROM data 也会一同载入。



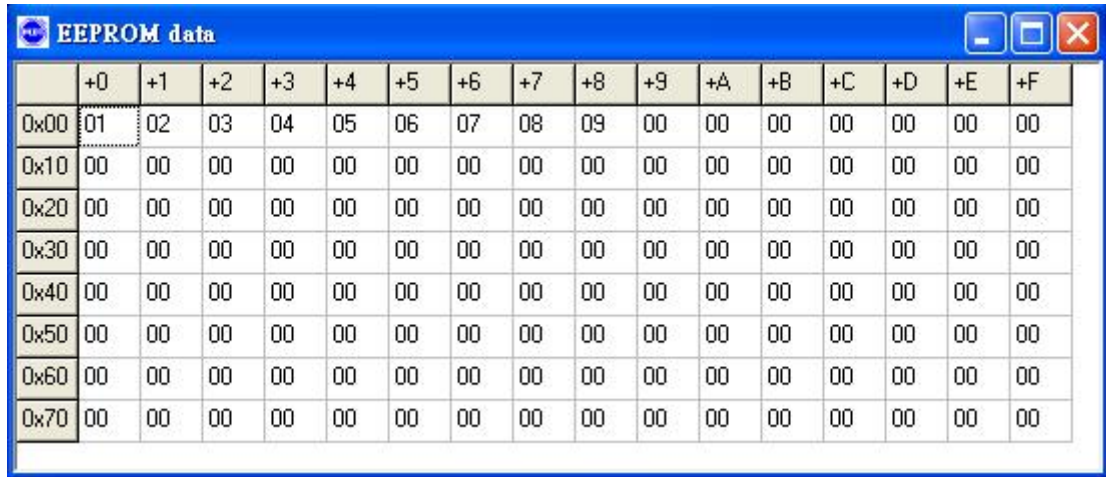
4. Microchip 之 hex file 可以透过编译将 EEPROM 值包含在二进档中，再透过 MDT Writer software 开启 hex 档。

以下提供 microchip 范例

ORG 2100H

;特殊起始地址

DE 01,02,03,04,05,06,07,08,09 ;[0]=01,[1]=02,[2]=03.....



	+0	+1	+2	+3	+4	+5	+6	+7	+8	+9	+A	+B	+C	+D	+E	+F
0x00	01	02	03	04	05	06	07	08	09	00	00	00	00	00	00	00
0x10	00	00	00	00	00	00	00	00	00	00	00	00	00	00	00	00
0x20	00	00	00	00	00	00	00	00	00	00	00	00	00	00	00	00
0x30	00	00	00	00	00	00	00	00	00	00	00	00	00	00	00	00
0x40	00	00	00	00	00	00	00	00	00	00	00	00	00	00	00	00
0x50	00	00	00	00	00	00	00	00	00	00	00	00	00	00	00	00
0x60	00	00	00	00	00	00	00	00	00	00	00	00	00	00	00	00
0x70	00	00	00	00	00	00	00	00	00	00	00	00	00	00	00	00